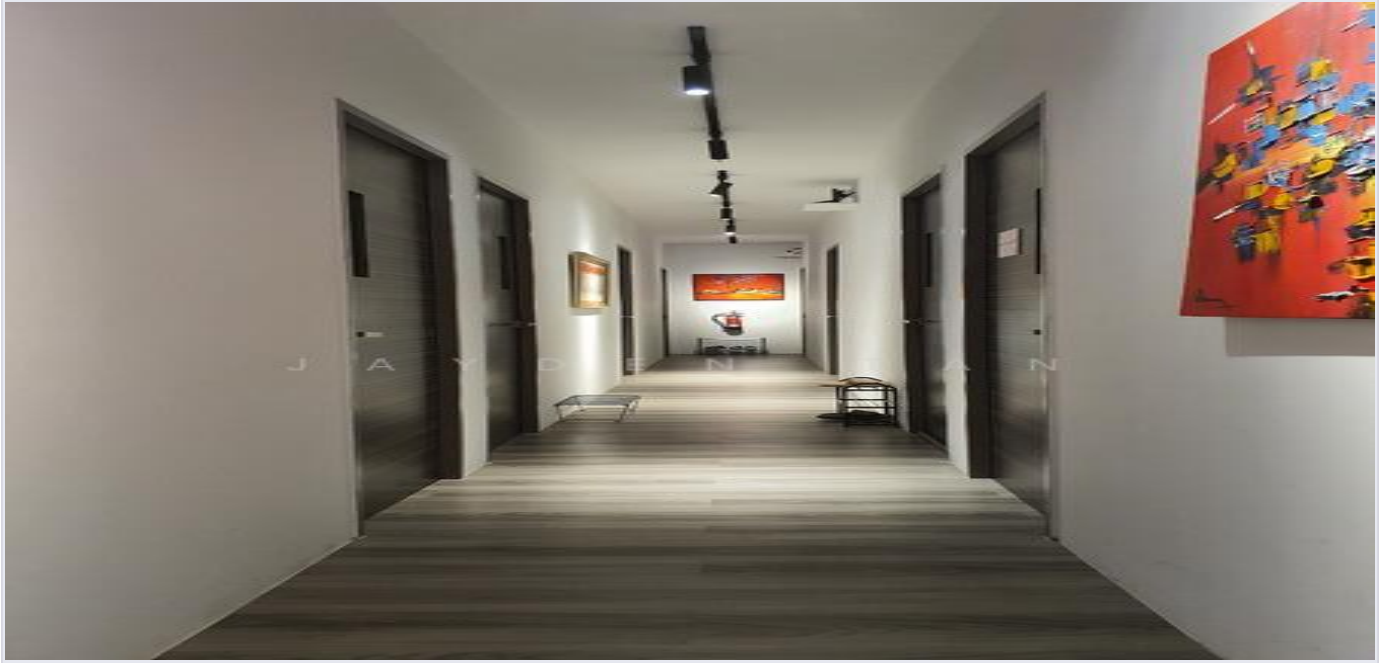


B1 INDUSTRIAL | FOR RENT

# Primz Bizhub

• Singapore



**\$830/mo**

**170 sqft (~\$4.88 psf)**

## Property Specifications

Property Type	B1 Industrial
Transaction	Rent
Floor Level	Mid Floor
Available From	17 Jun 2026
Floor Loading	12 kN/m2
Ceiling Height	4 m
Power Supply	140 Amp

## Property Description

Primz Bizhub Light Industrial (b1), 170 sqft for rent

## Key Features & Amenities

- 24/7 Access
- Air Conditioning
- Car Parking
- Passenger Lift
- Near MRT
- Near Bus Stop
- Food Court Nearby

### Interested? Contact Us Today

GoldenTulip Industrial | CEA Licence L30095851

**WhatsApp / Call: +65 9630 7118**

business65@goldentulip.com.sg | goldentulip.com.sg